

# International Faculty & Scholars Office



**SNAPSHOT** 2020-2021

# 1,831

TOTAL FACULTY & SCHOLARS

## REGION OF ORIGIN

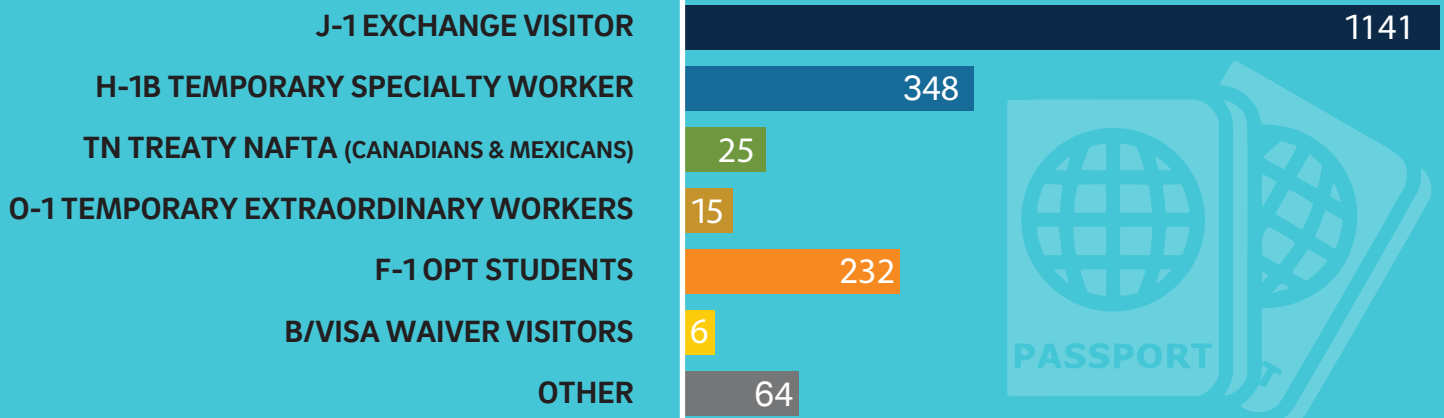
ASIA	1,035
EUROPE	419
LATIN AMERICA (INCLUDES MEXICO)	173
MIDDLE EAST	116
NORTH AMERICA	58
OCEANIA	17
SUB-SAHARAN AFRICA	12
Unknown	1

*\*Based on IIE Open Doors parameters*

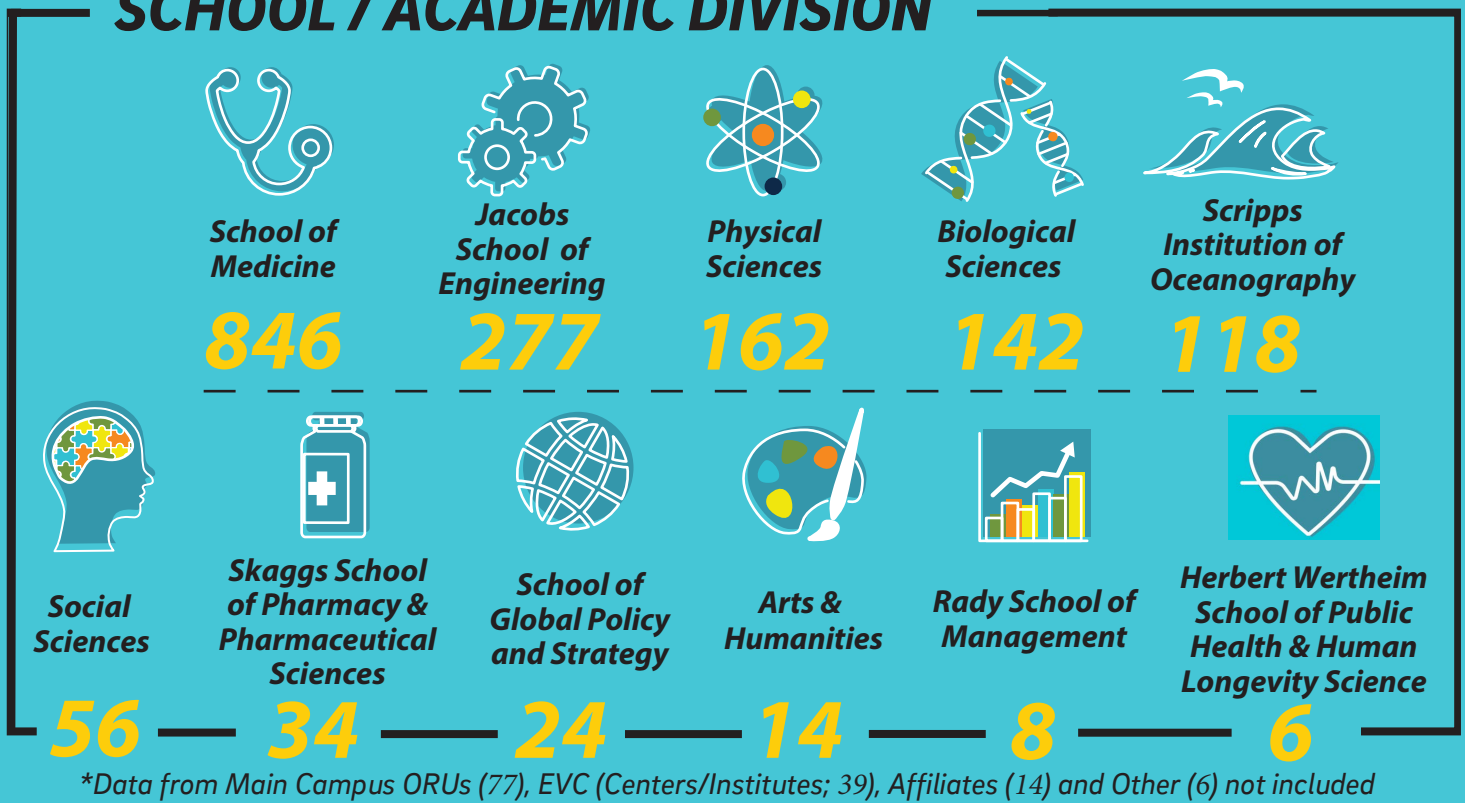
## TOP 10 COUNTRIES OF ORIGIN



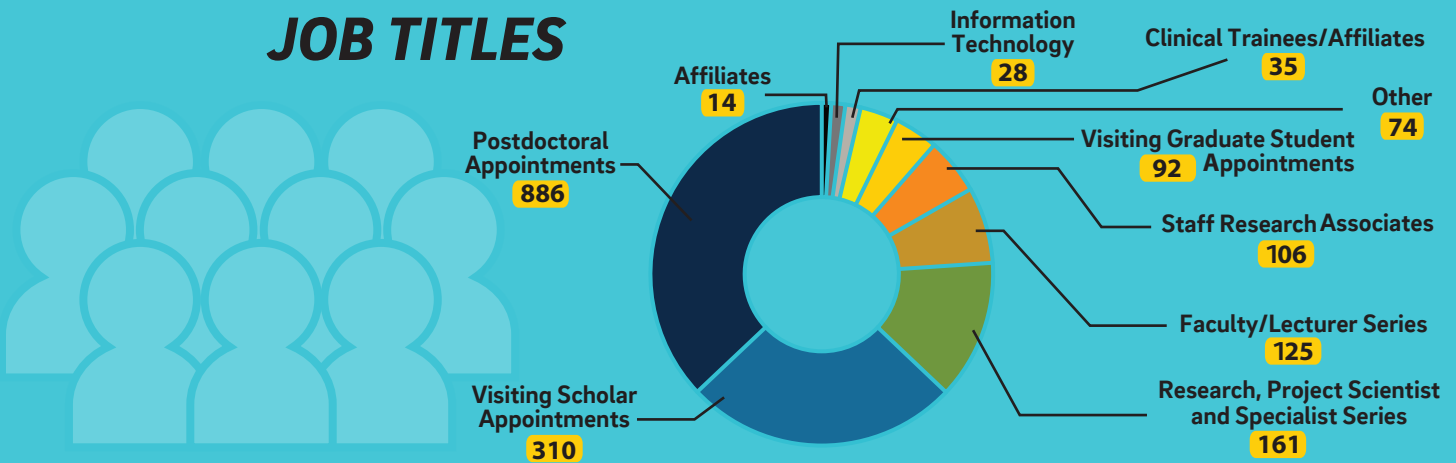
## VISA CLASSIFICATION



## SCHOOL / ACADEMIC DIVISION



## JOB TITLES



## TOP INSTITUTIONS FOR INTERNATIONAL RESEARCHERS

- |       |  |       |                                       |
|-------|--|-------|---------------------------------------|
| 4,989 | Harvard University                     | 2,629 | Yale University                       |
| 3,510 | Stanford University                    | 2,615 | University of Michigan - Ann Arbor    |
| 3,328 | University of California - Los Angeles | 2,486 | University of California - San Diego  |
| 3,159 | Columbia University                    | 2,312 | Johns Hopkins University              |
| 2,665 | University of California - Berkeley    | 2,167 | Massachusetts Institute of Technology |

# IFSO's Campus Services

*Our expert staff provide a wide array of services to academic departments and approximately 2,000 international faculty, researchers, and other visitors coming to UC San Diego.*



**Immigration Advising  
and Processing**



**Department  
Trainings**



**Programs and  
Events**



**Helpful  
Resources**



**UC San Diego**  
**International Faculty  
& Scholars Office**

[ifso.ucsd.edu](http://ifso.ucsd.edu)



**Monday-Friday | 9 am -1 pm**  
University Center 214 on Library Walk



+1 (858) 246-1448



[ischolars@ucsd.edu](mailto:ischolars@ucsd.edu)



University of California, San Diego  
9500 Gilman Drive, M/C 0123  
La Jolla, CA 92093-0123

**8 Professional Staff**



[/ifso.ucsd](https://www.facebook.com/ifso.ucsd)